

CORPORATE BROCHURE



Whizz Technology Ltd.

Serving the Web with power that lasts



whizz - *to move extremely quickly through the air or along a road with a loud whistling noise*

[Longman Dictionary]

Information Superhighway

Information is what is being moved; more and more people talk through the air today; the road is the information superhighway. Whizz Technology is committed to making information flow super fast, efficiently and reliably.

Started in 2000 as a member of Dax Group Ltd., Whizz Technology is an assemblage of young, up-and-coming IT talents. Our goal is simple: to develop innovative and practical solutions for enterprise web users. Whizz Technology and its development team members recognize the importance of research, and believe that good lasting products stem from good research. As a result, the company has collaborated with university research labs to realize our dreams.

Whizz Technology's operation in the first year has moved along a single track, which resulted in the company's first product family, the WhizzBee product family. In the days to come, the company plans to expand into multiple tracks which will target at several strategic products for enterprise web user market.

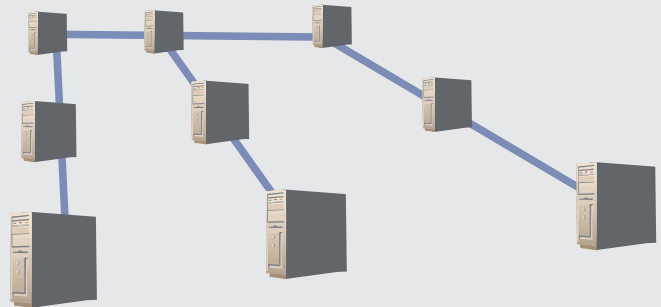
Core Technologies



Activities over the Internet are based on the client-server model. As the number of clients grows, servers are subject to heavy demands for performance. Most of today's server-side products rely on standalone machines for serving client requests, resulting in poor performance when the number of requests reaches a certain threshold. The clustering technology offers a solution to the problem. The aggregate power of a cluster can easily outperform a standalone server machine, and a cluster can scale up easily by adding more computers. The deliverable performance is virtually unlimited. We rely on clustering technology for all our server products.

*Internet is for everyone
IP will be on everything
servers will be everywhere*

Whizz Technology Ltd.
Corporate Vision



"Of the different types of overtly parallel computer organizations that have emerged, from SIMD to vector supercomputers, from associative arrays to dataflow, from reduction machines to MIMD-SIMD combinations, from hierarchies to webs to pyramids, the only forms of overtly parallel computer organization that have survived intact to the mid-90s have been symmetric multiprocessors, clusters, and clusters' flamboyant sisters, the massively parallel multicomputers."

Gregory F. Pfister,
author of *In Search of Clusters*

Product Profile



The first flagship product of Whizz Technology is the WhizzBee Product Family. WhizzBee leverages the state-of-art clustering technology and Whizz's patent-pending EC-Cache Technology[†] to provide high scalability and availability most needed by mission-critical web applications.

Using clustering technology, our mission is to design and build high-performance servers for serving the Internet that are scalable, reliable, and cost-effective.

Whizz Technology Ltd.
Corporate Mission

WhizzBee Web Server

The WhizzBee Web Server is a high-performance web server software that provides instant content delivery and 24x7 availability for business applications. It is based on the cluster architecture. WhizzBee Web Server is highly scalable, and its performance can be enhanced by hot-plugging commodity nodes into the cluster. The workloads of the nodes are dynamically balanced which further uplifts the performance and stability. It is an ideal choice for building new web sites which will unleash all the power and potential of the clustering technology and our EC-Cache Engine.

WhizzBee Proxy Server

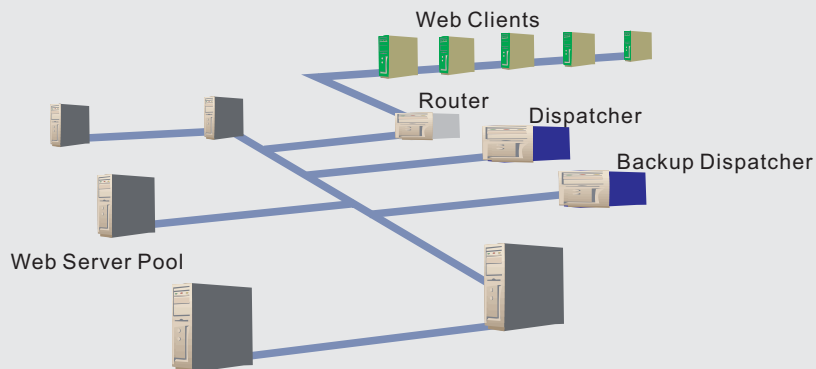
The WhizzBee Proxy Server is built on our EC-Cache technology. It provides a smoother and more enjoyable web experience to the local clients and helps to reduce network traffic. Remote servers are contacted only when necessary and user requests will enjoy a much faster response when they are served by WhizzBee Proxy Server directly.

WhizzBee Site Accelerator

The WhizzBee Site Accelerator boosts the performance of existing web servers without having to modify current software and data. As a transparent front-end of a running web server, the WhizzBee Site Accelerator provides the same benefits and performance provided by the WhizzBee Web Server. Once installed, the accelerator is transparent and remains hassle-free as long as the existing web server is running.

WhizzBee Proxy-Accelerator

The WhizzBee Proxy-Accelerator combines the functionalities of the WhizzBee Proxy Server and the Site Accelerator. Intranets that have their own web server and proxy need only a single WhizzBee Proxy-Accelerator to perform these two tasks, instead of having to deploy two separate servers, which is inefficient and uneconomical. With the WhizzBee Proxy-Accelerator, users of the intranet can have more responsive web connections while clients out in the Internet will enjoy efficient content delivery.



[†] Patent-pending at USPTO, s/n: 09/805,340



Key Benefits

All WhizzBee products offer the benefits of capital investment preservation, ease of installation, and lower cost of administration and maintenance.

Capital Investment Preservation

Using WhizzBee, corporate network administrators can seamlessly and transparently integrate existing stand-alone commodity server components into a collaborative virtual environment, significantly boosting the quality of service level while preserving past capital investment.

Conventional performance upgrade often requires replacement of the whole legacy system with a more powerful one. Using WhizzBee's clustering technology, the computing resources can be united to form a single empowered Internet server platform. This guarantees superior performance/cost ratio. Not only IT investment is protected, but also future growth and performance demands can be continuously fulfilled by increasing the number of server components. Scalability is therefore realized immediately.

Investment Protection • Ease of Installation • Lower Cost of Management

WhizzBee Product Family
Key Benefits

Ease of Installation and Lower Management Cost

Apart from the performance boost, WhizzBee also emphasizes the convenience and ease of installation, management and performance monitoring. WhizzBee provides two options for all tools: command-line and GUI-based, satisfying different needs and customs of administrators. WhizzBee also produces system and event logging in a highly configurable manner. Network administrators can be rest assured that their Web services will run non-stop reliably while all common events will be catered for automatically and gracefully.

WhizzBee understands the mobility of nowadays network administrators and thus a secure web-based remote administration facility is provided. The operations of WhizzBee will be done securely through password-authentication while the web-based nature allows system reconfiguration, startup/shutdown and administration to be done anywhere.



Key Features

All WhizzBee products share the features of high reliability, unparalleled performance and scalability, as well as high transparency and configurability.

High reliability

Businesses on the Internet will be most intolerant of server downtime. With clusters equipped with the necessary failure detection and recovery software, tasks running on the failed machine can be migrated to other running machines.

Unparalleled performance and scalability

High performance and scalability are achieved through techniques such as efficient request dispatching, cooperative caching, and dynamic load balancing.

High transparency and configurability

Our ultimate design goal is single system image (SSI) with which the cluster will behave like a single machine. The administration of an SSI cluster would be as easy as that of a standalone computer. Adding or removing computers and recovering from failure would be trivial tasks. All these are achievable through a software layer that integrates the various cluster components together in a seamless way.

Scalability • Reliability • Performance

Whizz Technology Ltd.
Uncompromising Design Goals



*The best way to predict the future
is to invent it.*

Alan Kay

Upcoming Products

Whizz Technology is constantly strengthening our product profile. To name but a few, our products in planning and development include a geographically distributed web server, a web-based front-end, and a database accelerator.

WhizzBee GeoPoints

WhizzBee GeoPoints is an augmented version of current WhizzBee products to cater for the need of geographically distributed web servers. Web contents are replicated at different geographic locations. The servers will be load-balanced by WhizzBee GeoPoints to provide the shortest access latency and reduce long-distance (expensive) bandwidth consumption.

WhizzBee Site-Seeing

Administration is often the dominant cost of maintaining a complicated system, especially for distributed cluster services. WhizzBee Site-Seeing serves the purpose to manage the operations of a large number of WhizzBee servers in one single web-based front-end. Server performance and site statistics will be illustrated in graphical format. This greatly reduces the total cost of ownership and offers high convenience to site administrators.

WhizzBee Database Accelerator

WhizzBee Database Accelerator makes use of the well-developed EC-Cache and clustering technologies to accelerate access of database files. The cache engine operates as a virtual device driver that examines remote memory for potential cache hits. WhizzBee Database Accelerator is most suitable for database applications which perform read transactions dominantly.



About Us

Whizz Technology Ltd. is a technology arm of its parent company, Dax Group Ltd. Buttressed by strong technology research expertise and business insight of top-tier researchers and finance professionals, Dax Group is uniquely qualified to be a competent and exceptional player in the technology industry.

Dax Group Ltd. is a privately funded research oriented organization. It is founded by a group of leading researchers in various disciplines that share the same vision. Its focus is to develop and apply new technologies that can contribute to the advance of the society. The research results will be developed and marketed through its various subsidiaries. Currently, Dax Group has two main focus groups, one is a high performance clustered server environment and the other is a wireless application framework. They are developed and marketed via the subsidiaries Whizz Technology Ltd. and Cougar Wireless Ltd. respectively.

The companies are composed of talented researchers and top-notch Master and Doctorate graduates in the respective fields together with business and finance professionals. The uniqueness of our products comes as a direct result of our research effort. That typically implies a relatively high barrier of entry to the market.

Dax Group is constantly expanding and looking for researchers in other disciplines who share the same vision. Dax Group also welcomes investment funds that are interested in supporting its various different projects.



Whizz Technology Ltd.
Suite 702A
625 King's Road
Quarry Bay
Hong Kong

Tel: (852) 2856 5090
Fax: (852) 2856 5086

www.whizztech.com
Info@whizztech.com
March 2002

Feel free to consult the Whizz team on enhancing your web server infrastructure. We provide customized and professional services on cluster web server installation, configuration, maintenance, performance tuning and technical training.